

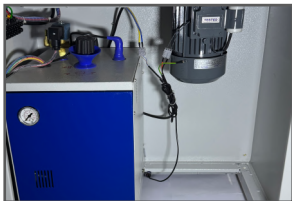
Online Vacuum Finishing Table.

With Built-in Steam Generator.
Rectangular Table Top.

Model : VFS 110



Compact Built-In Boiler. 4Kg/ Hr.



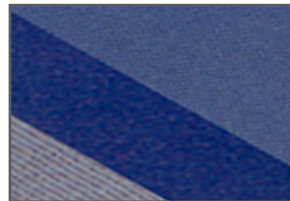
Compact **Built-In Boiler** with a capacity of 4 Kg/ Hr. Placed below the table top inside the cabinet, covered from the front with easy access from the rear. **S.S.304** shell of eight litres with efficient 2Kw heater for maximum output. Comes with safety cap & pressure gauge.

Centrifugal Suction Blower.



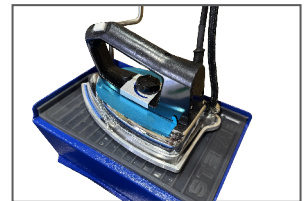
Made of aluminum. Connected to table top. Mounted on a high torque electric motor for quick start. Activated by spring loaded, full length foot pedal. Low noise & vibration less performance. **Efficient moisture suction. Quick drying of table top & padding**

Silicon Padding & S.S. Table Heater.

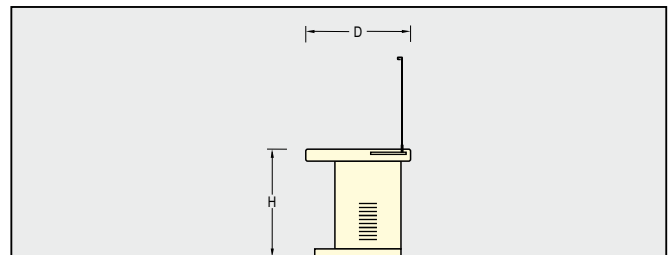
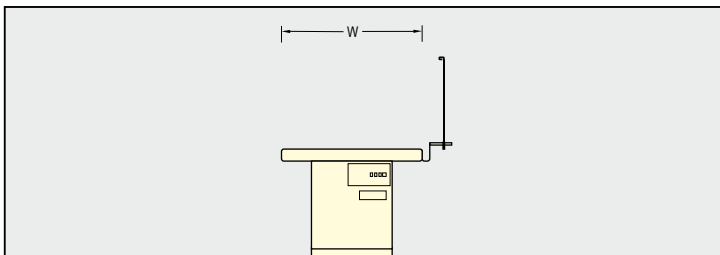


Perforated steel sheet which is covered by high porosity silicon foam padding & heat resistant cloth. The table top size is designed for quick ironing needs and can be installed in multiple numbers. **Efficient & Effective Airflow. Padding remains dry at all times.**

Electric Steam Iron. With Temperature Control.



Smart electric-steam iron, model ES20 with Teflon shoe placed on a side plate with silicon rest pad for heat precaution. The iron comes with **built-in heating element & temperature control thermostat**. Connected with the boiler via an electric cable and a insulated steam line.



| MODEL | TABLE TOP SIZE | BOILER HEATING | SUCTION MOTOR | OVERALL DIMENSIONS W x D x H | NET WT | CRATED WT | CRATED SIZE W x D x H | CRATED VOLUME |
|---------|----------------|----------------|---------------|---------------------------------|--------|-----------|-----------------------|---------------|
| VFS 110 | 1100 x 700 | 2 KW | 0.55 KW | 1340 x 730 x 850 | 85 Kg | 110 Kg | 1400 x 850 x 1100 | 1.30 M³ |

CONSUMPTION & ELECTRIC LOAD ARE FOR THE PURPOSE OF DESIGNING UTILITIES. IMAGES DO NOT ALWAYS SHOW THE OFFERED MACHINE.

ALL DIMENSIONS ARE IN MM. STANDARD MACHINES OPERATE ON 220V ±5%, 1 PHASE, 50Hz, AC ELECTRIC SUPPLY. SPECIFICATIONS / AESTHETICS ABOVE ARE SUBJECT TO CHANGE WITHOUT NOTICE.